

INCIDENT REPORT

Organization	Inspira health Network
Date	January 07,2018
Service	MSS-VME
Severity Level	Critical
Impact Level	Critical
Vulnerability Level	Critical

Description

Affected Systems: <https://170.75.33.142/>

In our Monitoring System (GOC) with the MSS-VME, we detected the following vulnerability know as **integer overflows**, where version of Windows running on the remote host is affected by an integer overflow condition in the HTTP protocol stack (HTTP.sys) due to improper parsing of crafted HTTP requests.

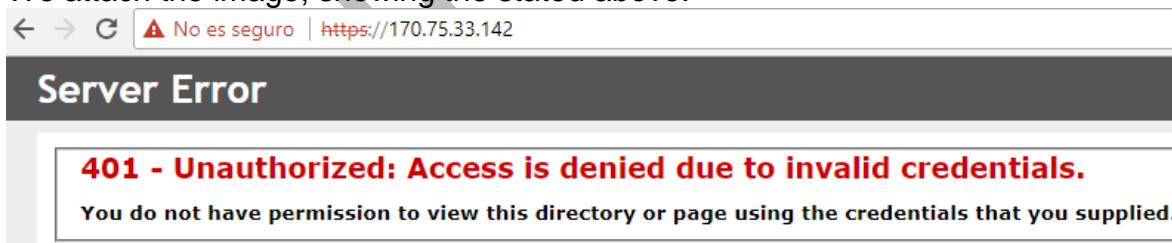
Impact

An unauthenticated, remote attacker can exploit this to execute arbitrary code with System privileges.

Solution

Microsoft has released a set of patches for Windows 7, 2008 R2, 8, 8.1, 2012, and 2012 R2.

We attach the image, showing the stated above.



For any questions please do not hesitate to contact us.

Sincerely,

GLESEC OPERATIONS CENTER -GOC