

MANAGED BREACH AND ATTACK SIMULATION

WEB VECTOR (MSS-BAS-Web)

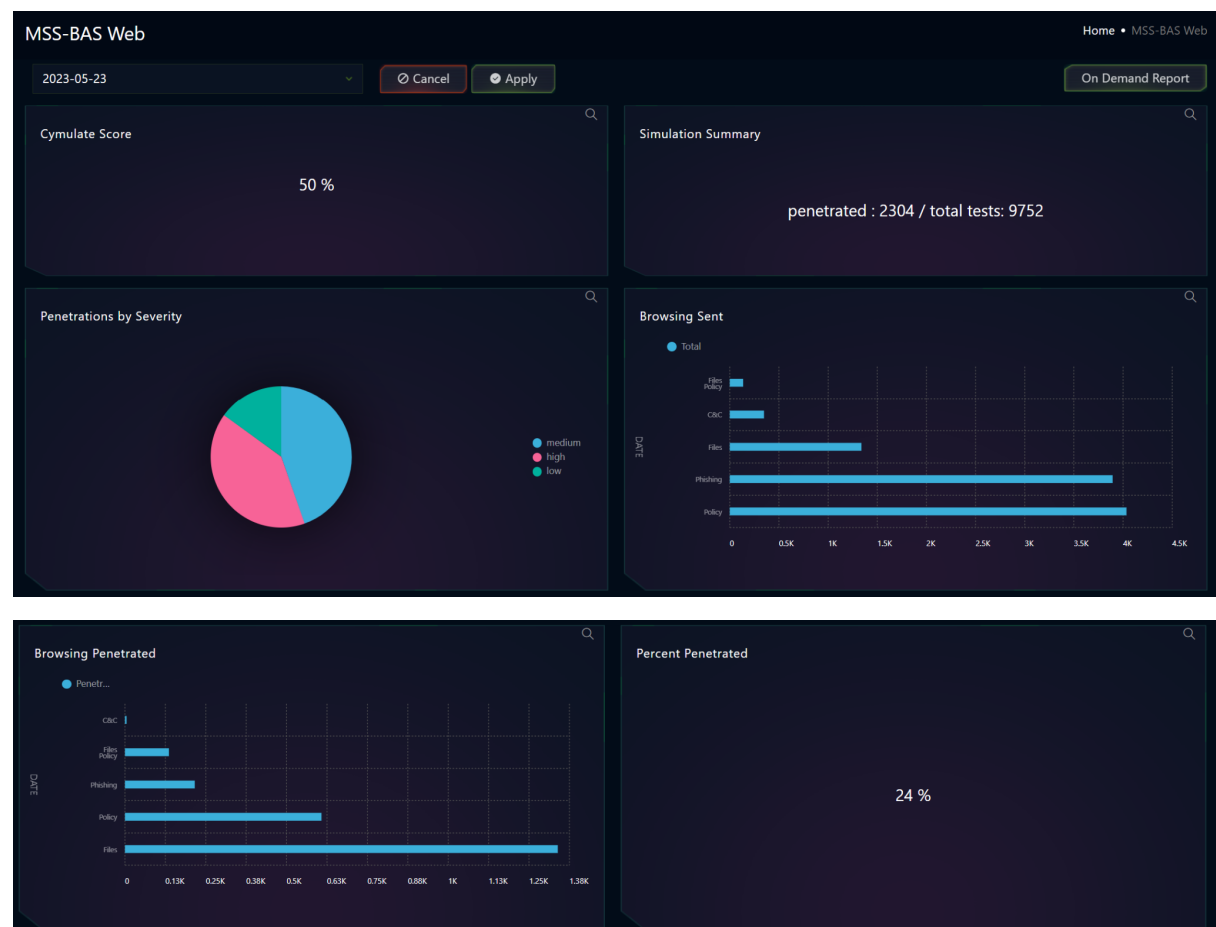
Revision V053023

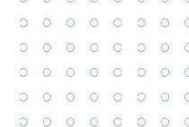
This document is a briefing that describes the operation and use of the Managed Bridge and Attack Simulation platform, and it is meant for all users of SKYWATCH WEB Platform.

Purpose of this Dashboard

This SKYWATCH Dashboard(s) provide **visibility** to the technical and executive users of SKYWATCH for the **MSS-BAS** Service and the ability to generate an on-demand **report** for this service (with the information of the dashboard). These are deliverables for the service. There are more consolidated reports that combine the information of this service with other contracted services. Also certain of the parameters defined on this Dashboard are used as indicators to trigger SKYWATCH automations (GLESEC NOTABLE EVENTS – GNE) and this activates the GLESEC OPERATION CENTER(s) (GOC) to further investigate and for incident-response purposes.

The following presents the SKYWATCH MSS-BAS-Web





Simulations Sent/Penetrated			
	Category	Penetrated	Total
1	Policy	608	4035
2	Phishing	216	3894
3	Files	1339	1339
4	C&C	5	348
5	Files Policy	136	136

Detailed Description of functionality of the MSS-BAS-Web Dashboard

Below the description and use cases of each of the components.

ITEM	DESCRIPTION
Assessment Date Selector	<p>Used to select which assessment's data is used to populate the dashboard's info modules. SKYWATCH stores assessment data for up to 30 days</p> <p>Automatically defaults to the last available assessment.</p>
Cymulate Score	<p>Displays the overall Cymulate score for all Web Vector Assessment. This module is not affected by the Assessment Date Selector.</p> <p>For SKYWATCH WEB the refresh rate is once a day.</p> <p><i>This information is used to determine overall performance of the Web vector.</i></p>
Simulation Summary	<p>Displays the number of attacks attempted during this assessment and how many successfully penetrated.</p> <p>For SKYWATCH WEB the refresh rate is once a day. The information represents data from the assessment selected in the date selector.</p> <p><i>This information is used to determine overall performance of the Web vector.</i></p>
Penetrations by Severity	<p>Displays the distribution of attack severities used during the assessment</p> <p>For SKYWATCH WEB the refresh rate is once a day. The information represents data from the assessment selected in the date selector.</p> <p><i>This information is used to determine how at risk a client is for high, medium, or low severity attacks.</i></p>
Browsing Sent	<p>Displays the number and types of browser attacks sent during the assessment</p> <p>For SKYWATCH WEB the refresh rate is once a day. The information represents data from the assessment selected in the date selector.</p> <p><i>This information is used to view the attack type distribution of the assessment.</i></p>
Browsing Penetrated	<p>Displays the number of and types of browser attacks that successfully penetrated.</p> <p>For SKYWATCH WEB the refresh rate is once a day. The information represents data from the assessment selected in the date selector.</p> <p><i>This information is used to determine which web attack vector the client is particularly vulnerable to.</i></p>
	<p>Displays the percent of email attacks that successfully penetrated.</p>





Percent Penetrated	<p>For SKYWATCH WEB the refresh rate is once a day. The information represents data from the assessment selected in the date selector.</p> <p><i>This information is used to determine overall performance of the Web vector</i></p>
Simulations Sent/Penetrated	<p>Displays the number of and types of web attacks sent in total</p> <p>For SKYWATCH WEB the refresh rate is once a day. The information represents data from the assessment selected in the date selector.</p> <p><i>This information is used to determine which web attack vector the client is particularly vulnerable to.</i></p>
ON-DEMAND REPORT	<p>This action button will generate the MSS-BAS-Email REPORT based on the data of the dashboard with the corresponding TLP AMBER designation.</p>
HOW TO USER THIS DASHBOARD	<p>Presents this document.</p>

