



MANAGED BREACH AND ATTACK SIMULATION

WAF VECTOR (MSS-BAS-WAF)

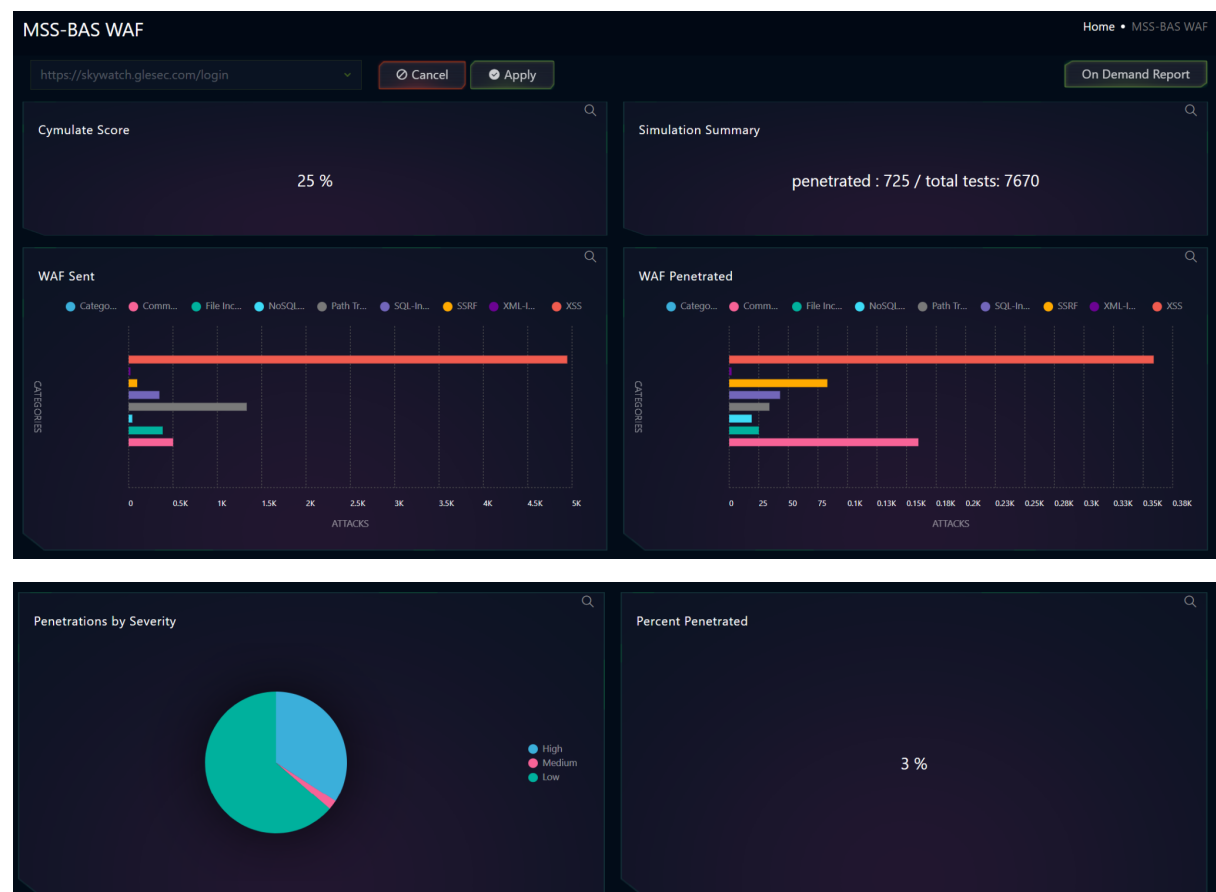
Revision V053023

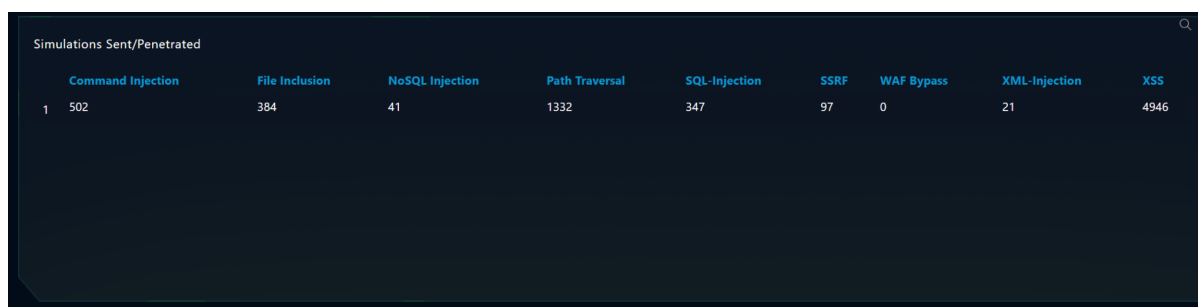
This document is a briefing that describes the operation and use of the Managed Bridge and Attack Simulation platform, and it is meant for all users of SKYWATCH WEB Platform.

Purpose of this Dashboard

This SKYWATCH Dashboard(s) provide **visibility** to the technical and executive users of SKYWATCH for the **MSS-BAS** Service and the ability to generate an on-demand **report** for this service (with the information of the dashboard). These are deliverables for the service. There are more consolidated reports that combine the information of this service with other contracted services. Also certain of the parameters defined on this Dashboard are used as indicators to trigger SKYWATCH automations (GLESEC NOTABLE EVENTS – GNE) and this activates the GLESEC OPERATION CENTER(s) (GOC) to further investigate and for incident-response purposes.

The following presents the SKYWATCH MSS-BAS-WAF





Detailed Description of functionality of the MSS-BAS-WAF Dashboard

Below the description and use cases of each of the components.

ITEM	DESCRIPTION
Assessment Target Selector	<p>Used to select which assessment is used to populate the dashboard's info modules if multiple assessments with different targets have been run. SKYWATCH stores assessment data for up to 30 days</p> <p>Automatically chooses the last available assessment for the target chosen.</p>
Cymulate Score	<p>Displays the overall Cymulate score for all WAF Vector Assessment. This module is not affected by the Assessment Target Selector.</p> <p>For SKYWATCH WEB the refresh rate is once a day.</p> <p><i>This information is used to determine overall performance of the WAF vector.</i></p>
Simulation Summary	<p>Displays the number of attacks attempted during this assessment and how many successfully penetrated.</p> <p>For SKYWATCH WEB the refresh rate is once a day. The information represents data from the assessment selected in the target selector.</p> <p><i>This information is used to determine overall performance of the WAF vector.</i></p>
Penetrations by Severity	<p>Displays the distribution of attack severities used during the assessment</p> <p>For SKYWATCH WEB the refresh rate is once a day. The information represents data from the assessment selected in the target selector.</p> <p><i>This information is used to determine how at risk a client is for high, medium, or low severity attacks.</i></p>
WAF Sent	<p>Displays the number and types of WAF attacks sent during the assessment</p> <p>For SKYWATCH WEB the refresh rate is once a day. The information represents data from the assessment selected in the target selector.</p> <p><i>This information is used to view the attack type distribution of the assessment.</i></p>
WAF Penetrated	<p>Displays the number of and types of WAF attacks that successfully penetrated the WAF.</p> <p>For SKYWATCH WEB the refresh rate is once a day. The information represents data from the assessment selected in the target selector.</p> <p><i>This information is used to determine which WAF attack vector the client is particularly vulnerable to.</i></p>
	Displays the percent of WAF attacks that successfully penetrated the WAF





Percent Penetrated	<p>For SKYWATCH WEB the refresh rate is once a day. The information represents data from the assessment selected in the target selector.</p> <p><i>This information is used to determine overall performance of the WAF vector</i></p>
Simulations Sent/Penetrated	<p>Displays the number of and types of WAF attacks sent in total</p> <p>For SKYWATCH WEB the refresh rate is once a day. The information represents data from the assessment selected in the target selector.</p> <p><i>This information is used to determine which WAF attack vector the client is particularly vulnerable to.</i></p>
ON-DEMAND REPORT	<p>This action button will generate the MSS-BAS-WAF REPORT based on the data of the dashboard with the corresponding TLP AMBER designation.</p>
HOW TO USER THIS DASHBOARD	<p>Presents this document.</p>

