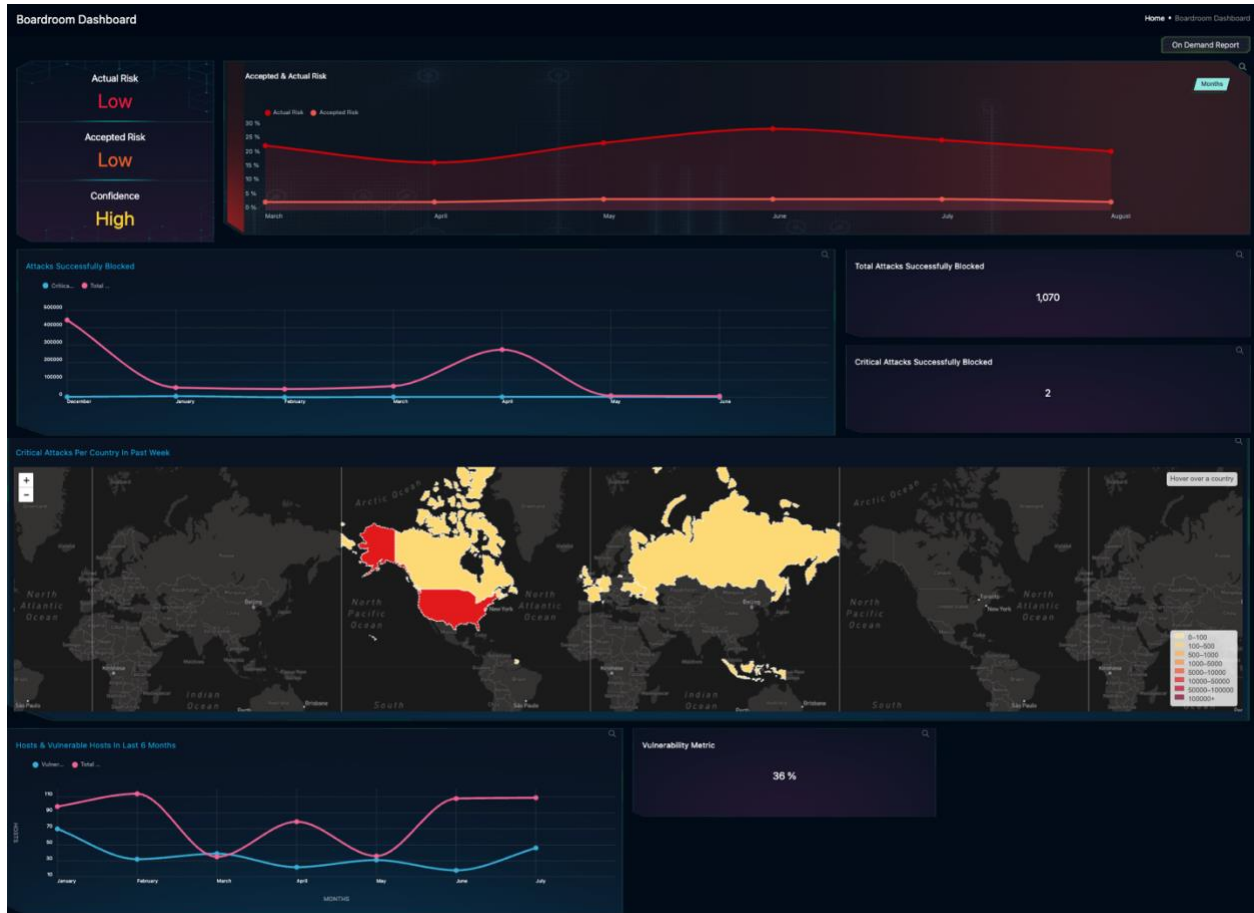


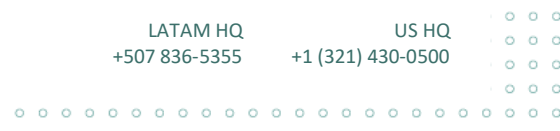
SKYWATCH EXECUTIVE DASHBOARDS: BOARDROOM

The information curated in this dashboard presents - in real time - RISK, THREATS, and VULNERABILITIES of the organization. Aligned with the GLESEC Seven Elements Model and the National Institute of Standard (NIST) framework.



Indicators and graphic representation

- Actual Risk value
- Acceptable Risk value
- Risk Histogram (showing actual and acceptable)
- Vulnerability Metric (organization-wide)
- Vulnerability Histogram
- Total and critical attacks successfully blocked.
- Histogram of Total and critical attacks successfully blocked.
- Global map of critical attacks per country for past week.





Reports

The dashboard supports on-demand report generation for the current value of the indicators. The report follows TLP (Transport Layer Protocol) standard from Homeland Security and will be filed under SKYWATCH / Reports / On-demand section.

On the monthly basis, the same type of report is created by GLESEC Operations with information from the prior month and filed in the SKYWATCH / Reports / Boardroom Report.

Minimum services required for this dashboard's operation

The following is the minimum list of required services.

Service
MSS-CSO
MSS-TAS
Vulnerability Handling (MSS-VME; MSS-VME-ADV; MSS-VM; MSS-EPM; MSS-BAS)
Any threat related service at the perimeter (MSS-DDOS, MSS-WAF, MSS-WAF-CLOUD, MSS-DDOS-CLOUD, MSS-BOT, MSS-UTM)

