

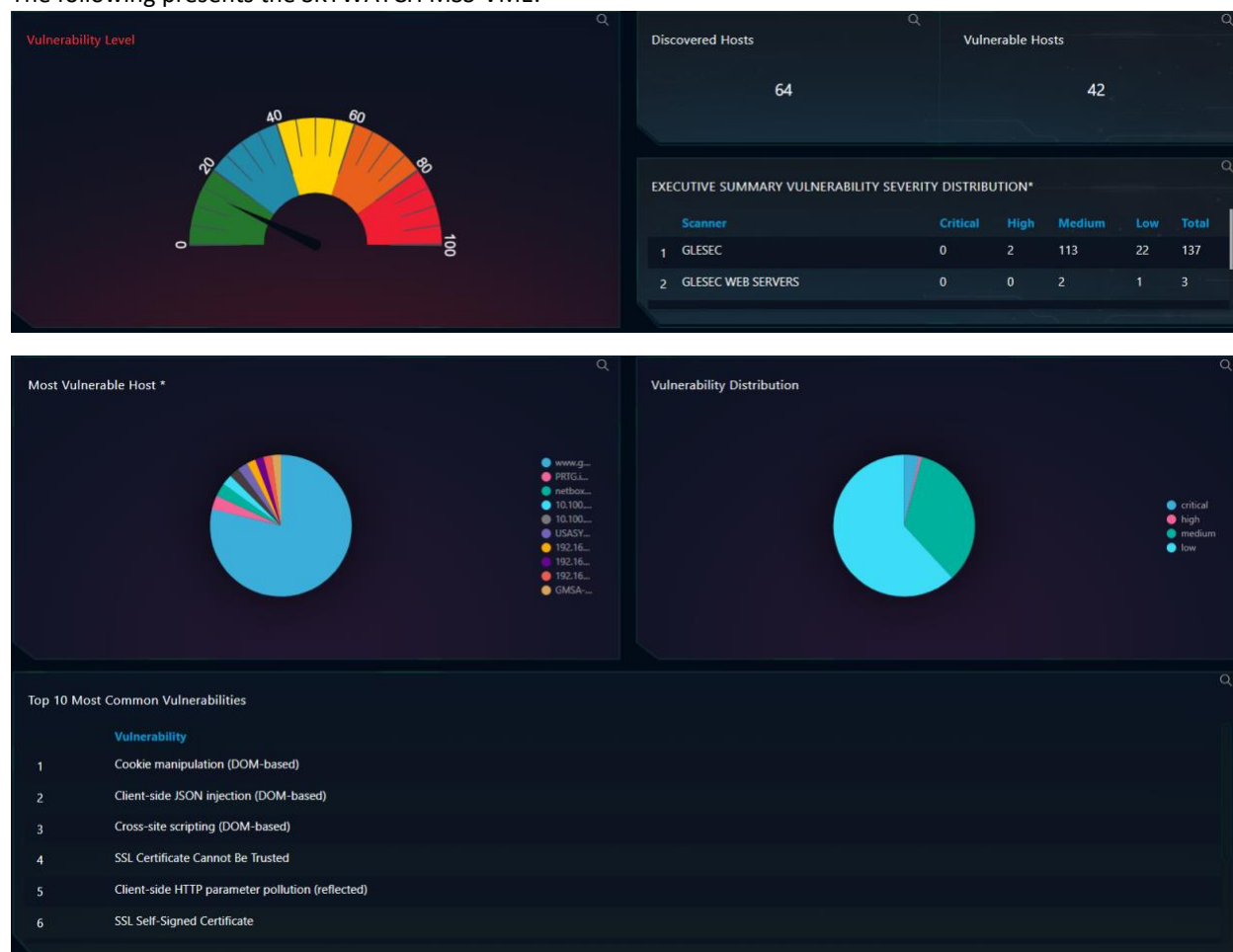
# EXTERNAL (AND ADVANCED) MANAGED VULNERABILITY SERVICE (MSS-VME)

*This document is a briefing that describes the operation and use of the MSS-VME and MSS-VME-ADV Service, and it is meant for all users of SKYWATCH WEB Platform.*

## Purpose of this Dashboard

This SKYWATCH Dashboard(s) provides **visibility** to the technical and executive users of SKYWATCH about the **MSS-VME** and **MSS-VME-ADV** Service and an on-demand **report** for this service (with the information of the dashboard). These are two of the deliverables for this service. There are more consolidated reports that combine the information of this service with other contracted services. Also certain of the parameters defined on this Dashboard are used as indicators to trigger SKYWATCH automations (GLESEC NOTABLE EVENTS – GNE) and this activates the GLESEC OPERATION CENTER(s) (GOC) into action to further investigate and for incident-response.

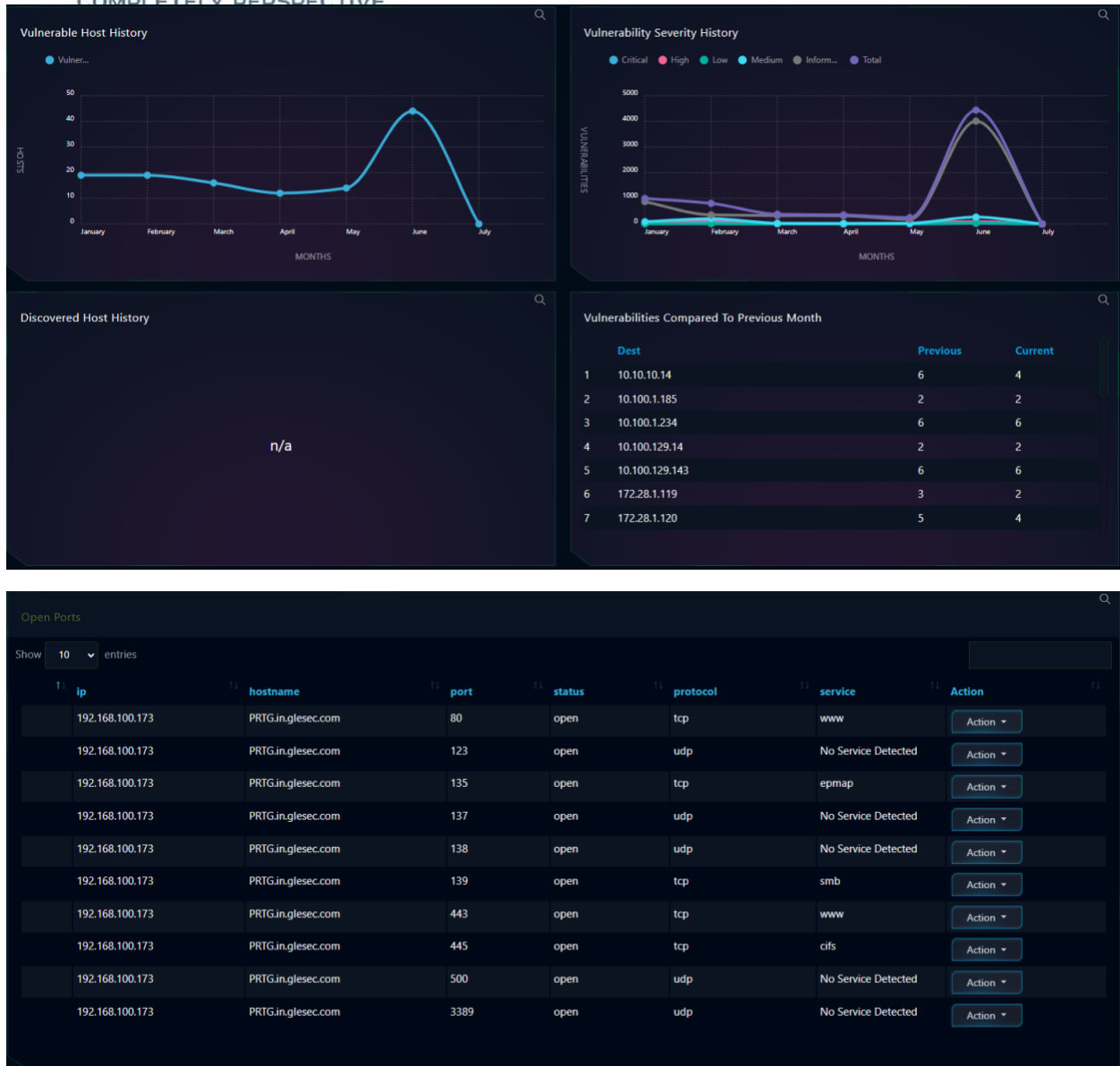
The following presents the SKYWATCH MSS-VME.

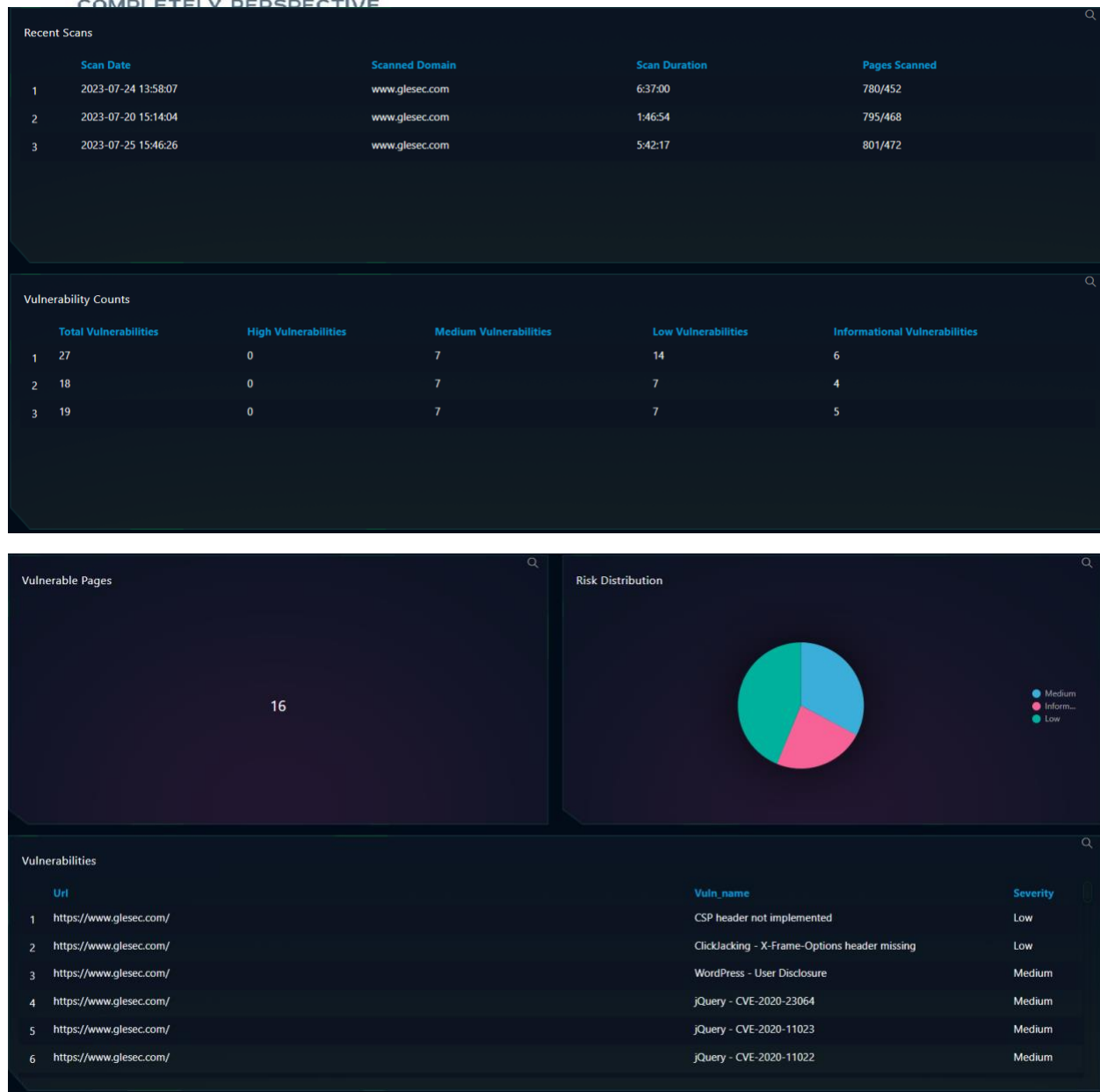




# GLESEC

COMPLETELY PERSPECTIVE





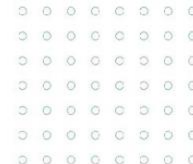
## Detailed Description of functionality of the MSS-VME Dashboard

Below the description and use cases of each of the components.

ITEM	DESCRIPTION
<b>Vulnerability Level</b>	<p>Displays a risk chart that shows the total vulnerability level.</p> <p>For the SKYWATCH WEB the refresh rate is once every day. The information represents data from the last 30 days.</p> <p>This information can be used to see what the overall vulnerability risk is.</p>



<b>Discovered Hosts</b>	<p>Displays all the discovered hosts.</p> <p>For the SKYWATCH WEB the refresh rate is once every day. The information represents data from the last 30 days.</p> <p>This information can be used to monitor how many hosts are discovered on your internal network.</p>
<b>Vulnerable Hosts</b>	<p>Displays from the discovered hosts how many have vulnerabilities.</p> <p>For the SKYWATCH WEB the refresh rate is once every day. The information represents data from the last 30 days.</p> <p>This information can be used to monitor how many discovered hosts are vulnerable on your internal network.</p>
<b>Executive Summary Vulnerability Severity Distribution</b>	<p>Displays groups that are being scanned and how many total vulnerabilities they have broken up into varying levels.</p> <p>For the SKYWATCH WEB the refresh rate is once every day. The information represents data from the last 30 days.</p> <p>This information can be used to monitor the amount of vulnerabilities on your network and if they are increasing or decreasing.</p>
<b>Most Vulnerable Host</b>	<p>Displays the top 10 most vulnerable hosts on your network.</p> <p>For the SKYWATCH WEB the refresh rate is once every day. The information represents data from the last 30 days.</p> <p>This information can be used to see which hosts are the weakest and should be addressed first.</p>
<b>Vulnerability Distribution</b>	<p>Displays how many vulnerabilities and in what risk category they belong to on a pie chart.</p> <p>For the SKYWATCH WEB the refresh rate is once every day. The information represents data from the last 30 days.</p> <p>This information can be used to see how many high level vulnerabilities are present on a pie chart.</p>
<b>Top 10 Most Common Vulnerabilities</b>	<p>Displays the top 10 vulnerabilities on your network.</p> <p>For the SKYWATCH WEB the refresh rate is once every day. The information represents data from the last 30 days.</p> <p>This information can be used to see which vulnerabilities are most common and should be addressed first.</p>
<b>Vulnerable Host History</b>	<p>Displays how many vulnerable hosts a network has on a graph over the span of 6 months.</p> <p>For the SKYWATCH WEB the refresh rate is once every day. The information represents data from the last 6 months.</p> <p>This information can be used to see what your network history is with your vulnerable devices.</p>
<b>Vulnerability Severity History</b>	<p>Displays the history of the different levels of the vulnerabilities over the span of 6 months.</p> <p>For the SKYWATCH WEB the refresh rate is once every day. The information represents data from the last 6 months.</p> <p>This information can be used to see what your network history is with your vulnerable devices and their levels of vulnerabilities.</p>



<b>Discovered Host History</b>	<p>Displays the history of the discovered hosts in the network over the span of 6 months.</p> <p>For the SKYWATCH WEB the refresh rate is once every day. The information represents data from the last 6 months.</p> <p>This information can be used to see what your network history is with your discovered devices.</p>
<b>Vulnerabilities Compared To Previous Month</b>	<p>Displays the amount of vulnerabilities on a device currently to how many it had in the previous month.</p> <p>For the SKYWATCH WEB the refresh rate is once every day. The information represents data from the last 60 days.</p> <p>This information can be used to see if your device's vulnerability count is improving.</p>
<b>Open Ports</b>	<p>Displays all of the open ports on each machine in the network.</p> <p>For the SKYWATCH WEB the refresh rate is once every day. The information represents data from the last 7 days.</p> <p>This information can be used to see what ports you have open on your devices and monitor those ports.</p>
<b>Recent Scans</b>	<p>Displays the recent scans on websites, how long they took and how many pages were scanned.</p> <p>For the SKYWATCH WEB the refresh rate is once every day. The information represents data from the last 30 days.</p> <p>This information can be used to monitor your recent website scans.</p>
<b>Vulnerability Counts</b>	<p>Displays the total amount of vulnerabilities broken up into different levels of risk from the recent scans.</p> <p>For the SKYWATCH WEB the refresh rate is once every day. The information represents data from the last 7 days.</p> <p>This information can be used to monitor how many vulnerabilities are on the website scanned and how severe they are.</p>
<b>Vulnerable Pages</b>	<p>Displays the total amount of pages scanned that have vulnerabilities.</p> <p>For the SKYWATCH WEB the refresh rate is once every day. The information represents data from the last 7 days.</p> <p>This information can be used to monitor how many pages from the recent scans are vulnerable.</p>
<b>Risk Distribution</b>	<p>Displays a pie chart of the risk distribution for the vulnerabilities from the scans.</p> <p>For the SKYWATCH WEB the refresh rate is once every day. The information represents data from the last 7 days.</p> <p>This information can be used to monitor what types of vulnerabilities are currently found in the scan.</p>
<b>Vulnerabilities</b>	<p>Displays a table that shows all of the vulnerabilities found in the website scans.</p> <p>For the SKYWATCH WEB the refresh rate is once every day. The information represents data from the last 7 days.</p> <p>This information can be used to monitor which vulnerabilities are more critical than others and should be fixed first.</p>



REPORT	This action button will generate a MSS-VME REPORT based on the data of the dashboard with the corresponding TLP AMBER designation.
--------	--