

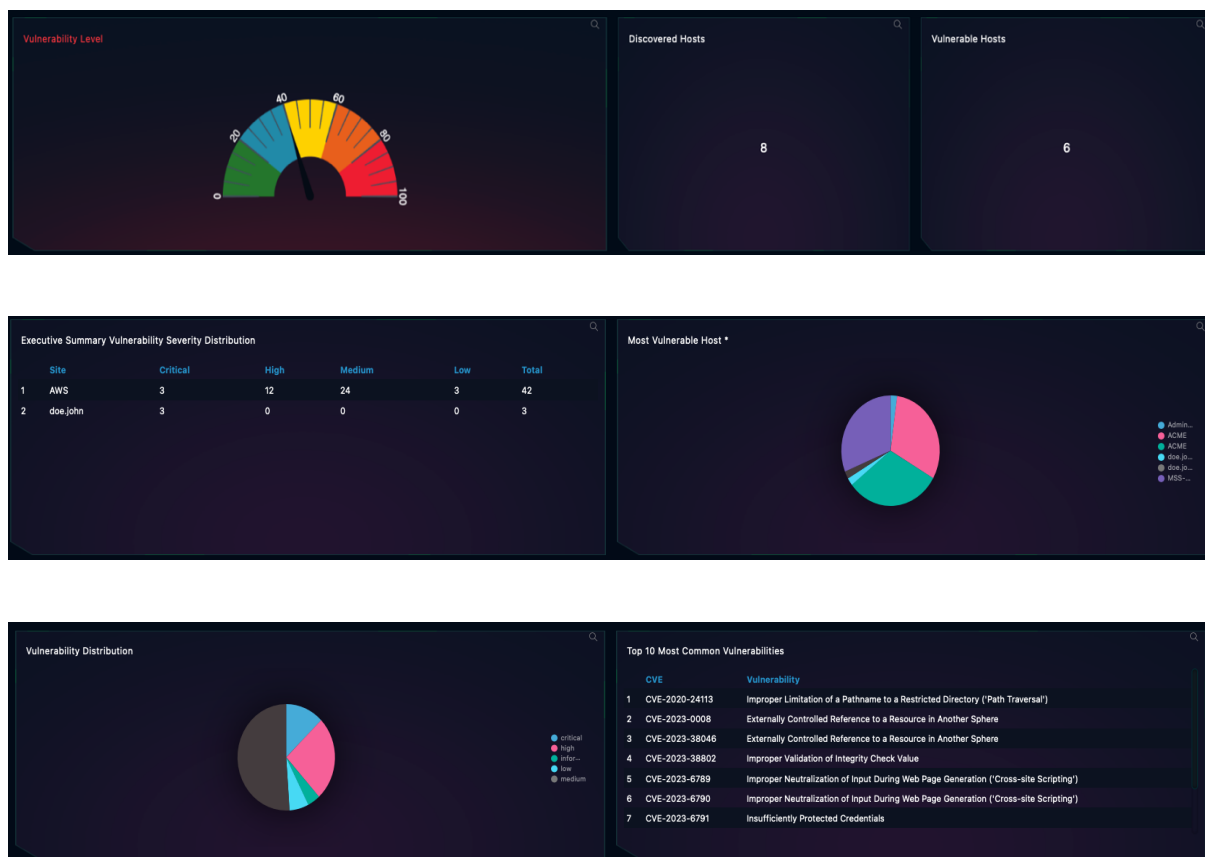
MANAGED IOT AND OT VULNERABILITIES SERVICE (MSS-IOT)

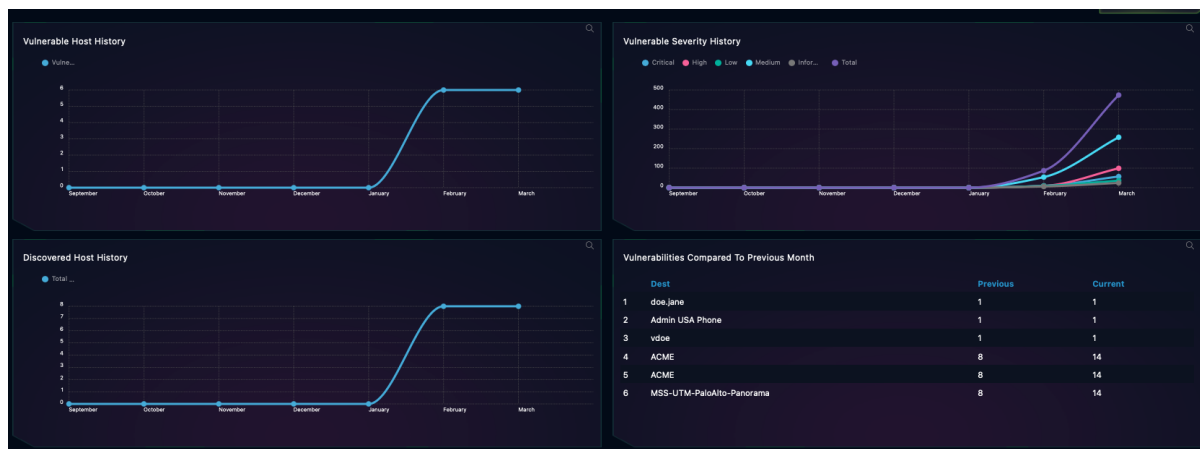
This document is a briefing that describes the operation and use of the MSS-IOT Service, and it is meant for all users of SKYWATCH WEB Platform.

Purpose of this Dashboard

This SKYWATCH Dashboard(s) provides visibility to the technical and executive users of SKYWATCH about the MSS -IOT Service and an on-demand report for this service (with the information of the dashboard). These are two of the deliverables for this service. There are more consolidated reports that combine the information of this service with other contracted services. Also certain of the parameters defined on this Dashboard are used as indicators to trigger SKYWATCH automation GNE and this activates the GOC into action to further investigate and for incident-response.

The following presents the SKYWATCH MSS-IOT.





Filter: Location and/or Division
Any Any Filter

25 entries per page Search...

↑	Priority	Severity	IP	OS	Hostname	Division	Location	Vulnerability	Vulnerability ID	Available Exploit	Vulnerability Publication	Since Last Seen	Last Seen On	Action
1	Not Found	Critical	126.180.97.79	SIP-T220 34.79.166.46	john.doe	john.doe	Not Set	Improper Limitation of a Pathname to a Restricted Directory ('Path Traversal')	CVE-2020-24113	false	https://acme-1175.com/vuln/detail/CVE-2020-24113	01 day(s)	2024/04/30 00:03:24+0000	Action
2	Not Found	High	74.121.218.115	ACME	ACME	Not Set	Not Set	Improper Ownership Management	CVE-2024-3383	false	https://acme-1175.com/vuln/detail/CVE-2024-3383	01 day(s)	2024/04/30 00:03:24+0000	Action
3	Not Found	High	74.121.218.115	ACME	ACME	Not Set	Not Set	Improper Input Validation	CVE-2024-3385	false	https://acme-1175.com/vuln/detail/CVE-2024-3385	01 day(s)	2024/04/30 00:03:24+0000	Action
4	Not Found	High	74.121.218.115	ACME	ACME	Not Set	Not Set	Allocation of Resources Without Limits or Throttling	CVE-2024-3382	false	https://acme-1175.com/vuln/detail/CVE-2024-3382	01 day(s)	2024/04/30 00:03:24+0000	Action
5	Not Found	Medium	74.121.218.115	ACME	ACME	Not Set	Not Set	Interpretation Conflict	CVE-2024-3386	false	https://acme-1175.com/vuln/detail/CVE-2024-3386	01 day(s)	2024/04/30 00:03:24+0000	Action
6	Not Found	Medium	74.121.218.115	ACME	ACME	Not Set	Not Set	Improper Privilege Management	CVE-2024-3388	false	https://acme-1175.com/vuln/detail/CVE-2024-3388	01 day(s)	2024/04/30 00:03:24+0000	Action
7	Not Found	Critical	74.121.218.115	ACME	ACME	Not Set	Not Set	Improper Neutralization of Special Elements used in a Command ('Command Injection')	CVE-2024-3400	true	https://acme-1175.com/vuln/detail/CVE-2024-3400	01 day(s)	2024/04/30 00:03:24+0000	Action

Detailed Description of functionality of the MSS-IOT Dashboard

Below the description and use cases of each of the components.

ITEM	DESCRIPTION
Vulnerability Level	<p>Displays a risk chart that shows the total vulnerability level.</p> <p>For the SKYWATCH WEB the refresh rate is once every day. The information represents data from the last 30 days.</p> <p>This information can be used to see what the overall vulnerability risk is.</p>
Discovered Hosts	<p>Displays all the discovered hosts.</p> <p>For the SKYWATCH WEB the refresh rate is once every day. The information represents data from the last 30 days.</p> <p>This information can be used to monitor how many hosts are discovered on your internal Network.</p>
Vulnerable Hosts	<p>Displays from the discovered hosts how many have vulnerabilities.</p> <p>For the SKYWATCH WEB the refresh rate is once every day. The information represents data from the last 30 days.</p> <p>This information can be used to monitor how many discovered hosts are vulnerable on your internal network.</p>
	Displays groups that are being scanned and how many total vulnerabilities they have broken up into varying levels.



Executive Summary Vulnerability Severity Distribution	For the SKYWATCH WEB the refresh rate is once every day. The information represents data from the last 30 days. This information can be used to monitor the amount of vulnerabilities on your network and if they are increasing or decreasing.
Most Vulnerable Host	Displays the top 10 most vulnerable hosts on your network. For the SKYWATCH WEB the refresh rate is once every day. The information represents data from the last 30 days. This information can be used to see which hosts are the weakest and should be addressed first.
Vulnerability Distribution	Displays how many vulnerabilities and in what risk category they belong to on a pie chart. For the SKYWATCH WEB the refresh rate is once every day. The information represents data from the last 30 days. This information can be used to see how many high level vulnerabilities are present on a pie chart.
Top 10 Most Common Vulnerabilities	Displays the top 10 vulnerabilities on your network. For the SKYWATCH WEB the refresh rate is once every day. The information represents data from the last 30 days. This information can be used to see which vulnerabilities are most common and should be addressed first.
Vulnerable Host History	Displays how many vulnerable hosts a network has on a graph over the span of 6 months. For the SKYWATCH WEB the refresh rate is once every day. The information represents data from the last 6 months. This information can be used to see what your network history is with your vulnerable Devices.
Vulnerability Severity History	Displays the history of the different levels of the vulnerabilities over the span of 6 months. For the SKYWATCH WEB the refresh rate is once every day. The information represents data from the last 6 months. This information can be used to see what your network history is with your vulnerable devices and their levels of vulnerabilities.
Discovered Host History	Displays the history of the discovered hosts in the network over the span of 6 months. For the SKYWATCH WEB the refresh rate is once every day. The information represents data from the last 6 months. This information can be used to see what your network history is with your discovered Devices.
Vulnerabilities Compared To Previous Month	Displays the amount of vulnerabilities on a device currently to how many it had in the previous month. For the SKYWATCH WEB the refresh rate is once every day. The information represents data from the last 60 days. This information can be used to see if your device's vulnerability count is improving.
Vulnerability Database	Displays a table that gives an extensive breakdown of the vulnerabilities on devices. For the SKYWATCH WEB the refresh rate is once every day. The information represents data from the last 30 days. This information can be used to show in great detail how severe the vulnerabilities are and what machine these vulnerabilities exist on. You can also click on action to create a case on the intranet or whitelist the vulnerability.
REPORT	This action button will generate a MSS-IOT REPORT based on the data of the dashboard with



	the corresponding TLP AMBER designation.
--	--