



MANAGED BREACH AND ATTACK SIMULATION

PHISHING VECTOR (MSS-BAS-Phishing)

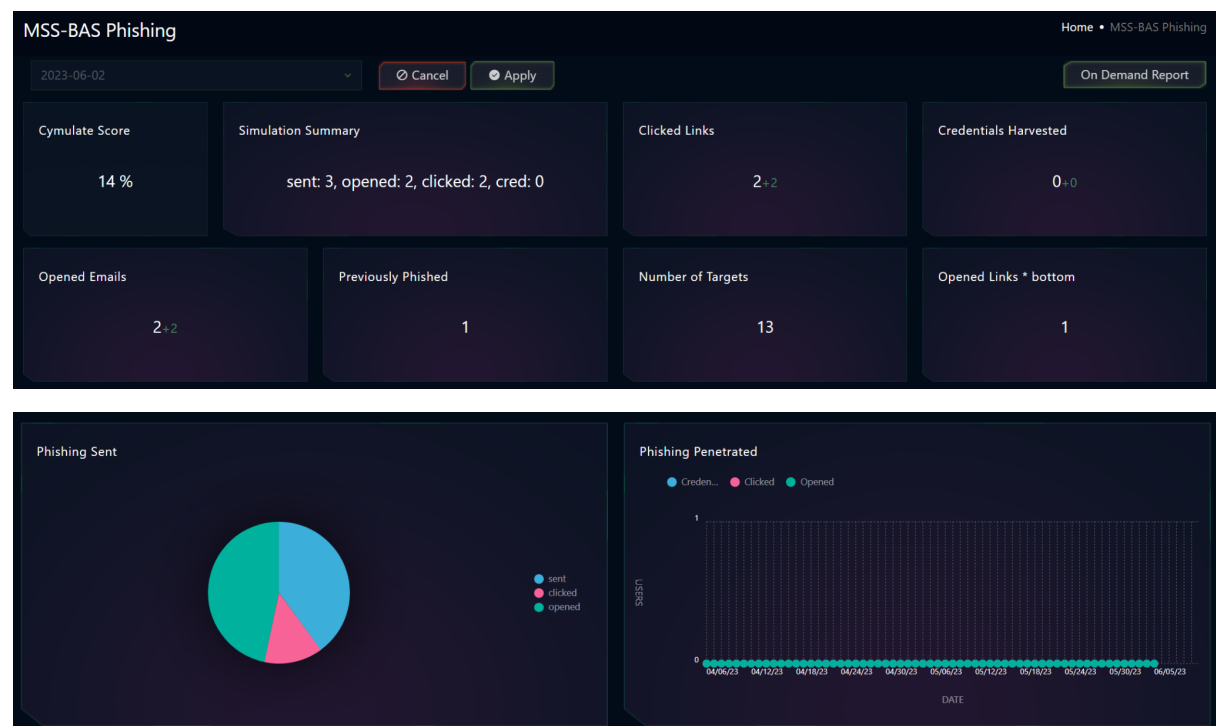
Revision V053023

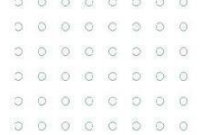
This document is a briefing that describes the operation and use of the Managed Bridge and Attack Simulation platform, and it is meant for all users of SKYWATCH WEB Platform.

Purpose of this Dashboard

This SKYWATCH Dashboard(s) provide **visibility** to the technical and executive users of SKYWATCH for the **MSS-BAS** Service and the ability to generate an on-demand **report** for this service (with the information of the dashboard). These are deliverables for the service. There are more consolidated reports that combine the information of this service with other contracted services. Also certain of the parameters defined on this Dashboard are used as indicators to trigger SKYWATCH automations (GLESEC NOTABLE EVENTS – GNE) and this activates the GLESEC OPERATION CENTER(s) (GOC) to further investigate and for incident-response purposes.

The following presents the SKYWATCH MSS-BAS-Phishing





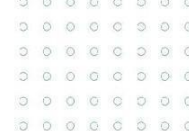
Simulations Sent/Penetrated Phishing Vector				
	Assessment	User	Assessment Result	Previously Phished
1	AV update	test1@glesec.com	clicked	false
2	AV update	test2@glesec.com	clicked	false
3	AV update	test3@glesec.com	sent	false
4	AV update	test4@glesec.com	opened	true
5	AV update	test5@glesec.com	opened	true
6	AV update	test6@glesec.com	opened	false

Detailed Description of functionality of the MSS-BAS-Phishing Dashboard

Below the description and use cases of each of the components.

ITEM	DESCRIPTION
Assessment Date Selector	<p>Used to select which assessment's data is used to populate the dashboard's info modules. SKYWATCH stores assessment data for up to 30 days</p> <p>Automatically defaults to the last available assessment.</p>
Cymulate Score	<p>Displays the overall Cymulate score for all Phishing Vector Assessment. This module is not affected by the Assessment Date Selector.</p> <p>For SKYWATCH WEB the refresh rate is once a day.</p> <p><i>This information is used to determine overall performance of the Phishing vector.</i></p>
Simulation Summary	<p>Displays the number of attacks attempted during this assessment and how many successfully penetrated.</p> <p>For SKYWATCH WEB the refresh rate is once a day. The information represents data from the assessment selected in the date selector.</p> <p><i>This information is used to determine overall performance of the Phishing vector.</i></p>
Clicked Links	<p>Displays the number of links clicked during the assessment</p> <p>For SKYWATCH WEB the refresh rate is once a day. The information represents data from the assessment selected in the date selector.</p> <p><i>This information is used to determine how many participants failed the phishing assessment.</i></p>
Credentials Harvested	<p>Displays the number of passwords harvested during the assessment (Only used if the credential harvester option was selected during assessment creation)</p> <p>For SKYWATCH WEB the refresh rate is once a day. The information represents data from the assessment selected in the date selector.</p> <p><i>This information is used to assess how likely participants are to give out their credentials.</i></p>
Opened Emails	<p>Displays the number of emails opened during the assessment (does not mean the link inside was clicked).</p> <p>For SKYWATCH WEB the refresh rate is once a day. The information represents data from the assessment selected in the date selector.</p>





	<i>This information is used to determine how many participants actually viewed the phishing emails used in the assessment.</i>
Previously Phished	<p>Displays the number of participants in this assessment that failed a previous assessment and were phished</p> <p>For SKYWATCH WEB the refresh rate is once a day. The information represents data from the assessment selected in the date selector.</p> <p><i>This information is used to determine how many participants of this assessment were previously phished in a previous assessment.</i></p>
Number of Targets	<p>Displays the number of participants in this assessment</p> <p>For SKYWATCH WEB the refresh rate is once a day. The information represents data from the assessment selected in the date selector.</p> <p><i>This information is used to determine how many participants were used in this assessment</i></p>
Phishing Sent	<p>Displays the distribution of all phishing attempts sent during the assessment</p> <p>For SKYWATCH WEB the refresh rate is once a day. The information represents data from the assessment selected in the date selector.</p> <p><i>This information is used to determine how many participants opened or clicked the links included in the assessments.</i></p>
Phishing Penetrated	<p>Displays the distribution of all phishing attempts sent during the assessment</p> <p>For SKYWATCH WEB the refresh rate is once a day. The information represents data from the assessment selected in the date selector.</p> <p><i>This information is used to determine how many participants opened or clicked the links included in the assessments.</i></p>
Simulations Sent/Penetrated	<p>Displays the exact assessment results for every participant in the assessment</p> <p>For SKYWATCH WEB the refresh rate is once a day. The information represents data from the assessment selected in the date selector.</p> <p><i>This information is used to determine which users were susceptible to the phishing attack</i></p>
ON-DEMAND REPORT	<p>This action button will generate the MSS-BAS-Phishing REPORT based on the data of the dashboard with the corresponding TLP AMBER designation.</p>
HOW TO USER THIS DASHBOARD	<p>Presents this document.</p>

